



# Temprid®

READY-TO-SPRAY

## INSECTICIDE

**CONTROLS:** Ants (excluding fire ants), bed bugs, black widow spiders, boxelder bugs, brown recluse spiders, brown widow spiders, carpenter ants, carpenter bees, carpet beetles, centipedes, clothes moths, cluster flies, cockroaches, crickets, earwigs, elm leaf beetles, firebrats, fleas, flies, fruit flies, flour beetles, globular stink (kudzu) bugs, gnats, grain weevils, hide beetles, house flies, leather beetles, millipedes, mosquitoes, moths, multicolored Asian lady beetles, phorid flies, pill bugs, sciarid flies (fungus gnats), scorpions, silverfish, sow bugs, spiders, springtails, stable flies, ticks, wood-infesting beetles, and wasps.

**FOR USE IN AND AROUND:** Apartment buildings, bakeries\*, bottling facilities\*, breweries\*, cafeterias\*, correctional facilities, factories, hospitals, hotels, houses, industrial buildings, kitchens, laboratories, livestock housing, pet kennels, manufacturing establishments, nursing homes, poultry houses\*, processing and packing plants\*, restaurants\*, schools, stores, warehouses, and modes of transport (airplanes, automobiles, buses, marine vessels, rail cars, trailers, trucks).

\* non-food/non-feed areas

Dual mode of action: contact activity and systemic action

Control of hard to kill pest such as spiders, ants (excluding fire ants), and bed bugs

Kills bed bugs resistant to pyrethroid insecticides

Kills bed bug eggs

Controls bed bugs for up to 6 months on wooden, fabric or upholstered surfaces

Will not damage paints, plastics, fabrics, or other surfaces where water alone causes no damage

### ACTIVE INGREDIENTS:

Imidacloprid, 1-[6-(Chloro-3-pyridinyl)methyl]-N-nitro-2-imidazolidinimine ..... 0.050%  
 [2-(Cylfluthrin, Cyano(4-fluoro-3-phenoxyphenyl)methyl 3-(2,2-dichloroethenyl)-  
 2,2-dimethyl-cyclopropanecarboxylate)..... 0.025%

**OTHER INGREDIENTS:** ..... 99.925%

**TOTAL:** ..... 100.000%

EPA Reg. No. 432-1527

## STOP - Read The Label Before Use. KEEP OUT OF REACH OF CHILDREN

For **MEDICAL** and **TRANSPORTATION** Emergencies **ONLY** Call 24 Hours A Day 1-800-334-7577  
 For **PRODUCT USE** Information Call 1-800-331-2867

### PRECAUTIONARY STATEMENTS

#### ENVIRONMENTAL HAZARDS

This pesticide is extremely toxic to wildlife, fish, and aquatic invertebrates.

Care should be used when spraying around ornamental ponds. Do not apply directly to water or to areas where surface water is present or intertidal areas below the mean high water mark.

#### PHYSICAL & CHEMICAL HAZARDS

Contents under pressure. Do not puncture or incinerate container.

Exposure to temperatures above 120°F may cause bursting.

Do not spray directly into any electrical equipment such as radios, televisions, computers, etc. (where there is exposed wiring or contact points) due to the possibility of short circuits and shock hazard.

### DIRECTIONS FOR USE

It is a violation of federal law to use this product in a manner inconsistent with its labeling.

Shake well before use.

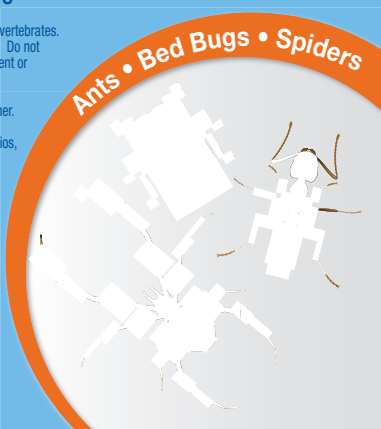
**Net Weight: 15.7 Oz (445g)**

80867395

81755116C 140123AV2

Produced for:

Bayer Environmental Science  
 A Division of Bayer CropScience LP  
 5000 CentreGreen Way, Suite 400  
 Cary, NC 27513



For indoor or outdoor use as either a crack and crevice injection or spot treatment. Use this product with the supplied actuator or injection tubes; this product can also be used in aerosol application equipment.

### Application Restrictions:

- Do not contact treated surfaces until dry. People and pets may re-enter after the treated area is dry.
- Do not apply in food/feed areas of food and feed handling establishments.
- Do not apply in classrooms, hospital, and/or nursing home rooms while they are occupied.
- Do not treat areas of furniture or upholstery where prolonged contact with humans will occur.
- Do not spray bed linens or other materials which come in direct contact with occupants of the bed.
- In the home, cover or thoroughly wash all food processing surfaces and utensils following treatment. Cover exposed food or remove from area being treated.
- Do not apply directly to impervious horizontal surfaces such as sidewalks, driveways, and patios except as a spot or crack and crevice treatment. During application, do not allow pesticide to enter or run off into storm drains, drainage ditches, gutters, or surface waters.
- All outdoor applications must be limited to spot or crack and crevice treatments only.
- Do not apply this product, by any application method, to linden, basswood, or other Tilia species.

**When to apply:** Apply when pests are seen or found. Reapply every 7 to 10 days until infestation is eliminated.

**Crack and crevice treatment:** Inject into cracks and crevices or void spaces where insects may be harboring, living, and breeding. Place injector tip into cracks, crevices, holes, and other small openings.

In light infestations or maintenance treatments, move the injection tube along cracks and crevices at the rate of 1 linear foot per second. For heavy infestations or clean-out treatments, move the injection tube along cracks and crevices at the rate of 6 inches per second. In enclosed void spaces, after calculating the void's cubic area, apply at a rate of 2 seconds per cubic feet. Several holes may be required in long-running voids.

**Spot treatment:** Hold nozzle between 12 to 18 inches from the surface to be treated. Release product at a rate of 4 seconds per 2 square feet. Each spot treatment must not exceed 2 square feet.

**Crawling pests:** Indoors, treat into and around known or suspected pest harborage and entry points, such as around water pipes and other utility lines, doors, windows, behind baseboards and molding, behind cabinetry and in cracks and crevices in cabinets, drawers and shelves, beneath and behind refrigerators, washing machines, and stoves. Make spot treatments in corners, to flooring beneath furniture, in closets and storage areas.

Outdoors, apply as a crack and crevice or spot treatment to surfaces on buildings, porches, patios, and other structures, openings around doors and windows, eaves and attic vents, utility entry points, weep holes, soffit areas and other exterior openings (including foundation cracks or drilled holes) where these pests may enter the structure or where they have been seen or found, or can find shelter.

**Bed bugs:** Spray bugs and eggs directly wherever possible; this product kills bed bug eggs that are directly treated and young nymphs emerging from eggs are killed by dried residues.

Remove linens and wash before reuse. On infested mattresses, apply only as spot treatment to tufts, seams, folds, and edges until moist; allow mattress to dry before remaking bed. Apply to bed springs, box springs, and the interior of bed frames or headboards, including all cracks and joints.

When upholstered furniture is infested, apply as spot treatment only to the infested tufts, seams, folds and edges.

Apply as a crack and crevice treatment to all baseboards, moldings, beneath floor coverings and carpets, closets, shelves, curtains, furniture and picture frames that may provide harborage to bed bugs. Inside empty luggage, apply to seams, folds and edges until moist; remove all clothes and other articles from luggage before application and allow treated areas to thoroughly dry before use.

**Ants (excluding fire ants):** Indoors, apply to trails on walls or baseboards, around pipes, under cabinets, on shelves, where ants are active, but try to follow trails back to where ants may be nesting or entering the structure and treat these locations.

Outdoors, treat around windows and doors, along sidewalks, or other areas where ants are seen. Locate and treat ant nests, if possible; follow trails of foraging workers, check under objects near the structure, and inspect other likely nest sites. Where ant nests are located in tree hollows or non-structural wooden construction (e.g.; posts, fences, decks), treat the interior cavity and/or the nest site by injecting a sufficient volume of product.

**Ticks and fleas:** Apply spot treatments on and around pet sleeping quarters and bedding, and as a crack and crevice or void treatment around the pet's habitat. Treat carpeting, furniture, and floor coverings where fleas and ticks are found. One application will kill adult fleas for 2 to 3 months, and aids in control of larval fleas for up to 1 month.

**Flying insect pests:** Apply to surfaces where house flies or other listed flying insects congregate, collect or rest.

**Wasps:** Make applications directly into nests. Remove and destroy treated nests if possible, or retreat nests as necessary.

**Carpenter bees:** Apply the spray directly into gallery entrance holes.

Exterior wood surfaces may be treated to prevent nest cavity excavation by adult carpenter bees.

**Occasional or fall invaders:** Apply directly to listed insects that have congregated around doors, windows or similar areas where they may enter structures.

**Wood-infesting beetles:** Locate active galleries. Penetrate the gallery system by drilling holes to receive the injector tip. Inject spray into the gallery system. Drill holes in commonly occupied areas should be sealed after treatment. Avoid drilling (to access voids) where electrical wiring, plumbing lines, etc. are located.

For inaccessible surfaces, drill and treat the interior of structural voids. Apply the spray to the wood surface using sufficient volume to cover the surface, but avoid applying to the point of runoff. When spraying wood surfaces overhead in living areas, cover surfaces below the treated area with plastic sheeting or similar material.

## STORAGE AND DISPOSAL

Do not contaminate water, food, or feed by storage or disposal.

### PESTICIDE STORAGE:

Store in a cool, dry area. Store away from food and pet food.

**PESTICIDE DISPOSAL:** Do not puncture or incinerate! Non-refillable container.

### CONTAINER HANDLING:

Do not reuse or refill this container.

If empty: Place in trash or offer for recycling if available.

If partly filled: Call your local solid waste agency for disposal instructions.

### IMPORTANT: READ BEFORE USE

Read the entire Directions for Use, Conditions, Disclaimer of Warranties and Limitations of Liability before using this product. If terms are not acceptable, return the unopened product container at once.

By using this product, user or buyer accepts the following Conditions, Disclaimer of Warranties and Limitations of Liability.

**CONDITIONS:** The directions for use of this product are believed to be adequate and must be followed carefully. However, it is impossible to eliminate all risks associated with the use of this product. Crop injury, ineffectiveness or other unintended consequences may result because of such factors as weather conditions, presence of other materials, or the manner of use or application, all of which are beyond the control of Bayer CropScience LP. All such risks shall be assumed by the user or buyer.

**DISCLAIMER OF WARRANTIES:** TO THE EXTENT CONSISTENT WITH APPLICABLE LAW, BAYER CROPSCIENCE LP MAKES NO OTHER WARRANTIES, EXPRESS OR IMPLIED, OF MERCHANTABILITY OR OF FITNESS FOR A PARTICULAR PURPOSE OR OTHERWISE, THAT EXCEED BEYOND THE STATEMENTS MADE ON THIS LABEL.

No agent of Bayer CropScience LP is authorized to make any warranties beyond those contained herein or to modify the warranties contained herein. TO THE EXTENT CONSISTENT WITH APPLICABLE LAW, BAYER CROPSCIENCE LP DISCLAIMS ANY LIABILITY WHATSOEVER FOR SPECIAL, INCIDENTAL OR CONSEQUENTIAL DAMAGES RESULTING FROM THE USE OR HANDLING OF THIS PRODUCT.

**LIMITATIONS OF LIABILITY:** TO THE EXTENT CONSISTENT WITH APPLICABLE LAW, THE EXCLUSIVE REMEDY OF THE USER OR BUYER FOR ANY AND ALL LOSSES, INJURIES OR DAMAGES RESULTING FROM THE USE OR HANDLING OF THIS PRODUCT, WHETHER IN CONTRACT, WARRANTY, TORT, NEGLIGENCE, STRICT LIABILITY OR OTHERWISE, SHALL NOT EXCEED THE PURCHASE PRICE PAID, OR AT BAYER CROPSCIENCE LP'S ELECTION, THE REPLACEMENT OF PRODUCT.

Bayer (reg d), the Bayer Cross (reg d), and Temprid® are registered trademarks of Bayer.



(01)00785740197990

Bayer

DOT 2Q M5749 DSC





### TEMPRID® READY-TO-SPRAY INSECTICIDE

Version 3.0 / USA  
102000026544

1/11  
Revision Date: 11/09/2015  
Print Date: 11/09/2015

## SECTION 1: IDENTIFICATION OF THE SUBSTANCE/MIXTURE AND OF THE COMPANY/UNDERTAKING

### Product identifier

**Trade name** TEMPRID® READY-TO-SPRAY INSECTICIDE

**Product code (UVP)** 80951701

**SDS Number** 102000026544

**EPA Registration No.** 432-1527

### Relevant identified uses of the substance or mixture and uses advised against

**Use** Insecticide

**Restrictions on use** See product label for restrictions.

### Information on supplier

**Supplier** Bayer Environmental Science  
2 T.W. Alexander Drive  
Research Triangle PK, NC 27709  
United States

**Responsible Department** Email: SDSINFO.BCS-NA@bayer.com

### Emergency telephone no.

**Emergency Telephone Number (24hr/ 7 days)** 1-800-334-7577

**Product Information Telephone Number** 1-800-331-2867

## SECTION 2: HAZARDS IDENTIFICATION

### Classification in accordance with regulation HCS 29CFR §1910.1200

Gases under pressure: Compressed gas



**Signal word:** Warning

### Hazard statements

Contains gas under pressure; may explode if heated.

### Precautionary statements

Protect from sunlight. Store in a well-ventilated place.

### Other hazards

No other hazards known.

**TEMPRID® READY-TO-SPRAY INSECTICIDE**Version 3.0 / USA  
102000265442/11  
Revision Date: 11/09/2015  
Print Date: 11/09/2015

---

**SECTION 3: COMPOSITION/INFORMATION ON INGREDIENTS**

Hazardous Component Name	CAS-No.	Concentration % by weight
Imidacloprid	138261-41-3	0.05
Beta-Cyfluthrin	68359-37-5	0.025

---

**SECTION 4: FIRST AID MEASURES****Description of first aid measures**

<b>General advice</b>	When possible, have the product container or label with you when calling a poison control center or doctor or going for treatment.
<b>Inhalation</b>	Move to fresh air. If person is not breathing, call 911 or an ambulance, then give artificial respiration, preferably mouth-to-mouth if possible. Call a physician or poison control center immediately.
<b>Skin contact</b>	Take off contaminated clothing and shoes immediately. Wash off immediately with plenty of water for at least 15 minutes. Call a physician or poison control center immediately.
<b>Eye contact</b>	Hold eye open and rinse slowly and gently with water for 15-20 minutes. Remove contact lenses, if present, after the first 5 minutes, then continue rinsing eye. Call a physician or poison control center immediately.
<b>Ingestion</b>	Call a physician or poison control center immediately. Rinse out mouth and give water in small sips to drink. DO NOT induce vomiting unless directed to do so by a physician or poison control center. Never give anything by mouth to an unconscious person. Do not leave victim unattended.

**Most important symptoms and effects, both acute and delayed****Symptoms** To date no symptoms are known.**Indication of any immediate medical attention and special treatment needed****Treatment** Appropriate supportive and symptomatic treatment as indicated by the patient's condition is recommended. There is no specific antidote.

---

**SECTION 5: FIREFIGHTING MEASURES****Extinguishing media**

<b>Suitable</b>	Use water spray, alcohol-resistant foam, dry chemical or carbon dioxide.
<b>Unsuitable</b>	None known.



### TEMPRID® READY-TO-SPRAY INSECTICIDE

Version 3.0 / USA  
102000026544

3/11  
Revision Date: 11/09/2015  
Print Date: 11/09/2015

---

<b>Special hazards arising from the substance or mixture</b>	Product is contained in a pressurised container which may explode on heating.
<b>Advice for firefighters</b>	
<b>Special protective equipment for fire-fighters</b>	Firefighters should wear NIOSH approved self-contained breathing apparatus and full protective clothing.
<b>Further information</b>	Avoid contact with spilled product or contaminated surfaces. Evacuate personnel to safe areas. Keep out of smoke. Fight fire from upwind position. Cool closed containers exposed to fire with water spray. Do not allow run-off from fire fighting to enter drains or water courses.
<b>Flash point</b>	> 93.3 °C
<b>Autoignition temperature</b>	no data available
<b>Lower explosion limit</b>	no data available
<b>Upper explosion limit</b>	no data available
<b>Explosivity</b>	not applicable

---

## SECTION 6: ACCIDENTAL RELEASE MEASURES

### Personal precautions, protective equipment and emergency procedures

**Precautions** Keep unauthorized people away. Isolate hazard area. Avoid contact with spilled product or contaminated surfaces.

### Methods and materials for containment and cleaning up

**Methods for cleaning up** Soak up with inert absorbent material (e.g. sand, silica gel, acid binder, universal binder, sawdust). Collect and transfer the product into a properly labelled and tightly closed container. Clean contaminated floors and objects thoroughly, observing environmental regulations.

**Additional advice** Use personal protective equipment. Do not allow to enter soil, waterways or waste water canal.

**Reference to other sections** Information regarding safe handling, see section 7.  
Information regarding personal protective equipment, see section 8.  
Information regarding waste disposal, see section 13.

---

## SECTION 7: HANDLING AND STORAGE

### Precautions for safe handling

**Advice on safe handling** Handle and open container in a manner as to prevent spillage. Use only in area provided with appropriate exhaust ventilation.

**Advice on protection against fire and explosion** Keep away from heat and sources of ignition.

**TEMPRID® READY-TO-SPRAY INSECTICIDE**Version 3.0 / USA  
1020000265444/11  
Revision Date: 11/09/2015  
Print Date: 11/09/2015**Hygiene measures**

Wash hands thoroughly with soap and water after handling and before eating, drinking, chewing gum, using tobacco, using the toilet or applying cosmetics. Smoking, eating and drinking should be prohibited in the application area.

Remove Personal Protective Equipment (PPE) immediately after handling this product. Before removing gloves clean them with soap and water. Remove soiled clothing immediately and clean thoroughly before using again. Wash thoroughly and put on clean clothing.

**Conditions for safe storage, including any incompatibilities****Requirements for storage areas and containers**

Store in a cool, dry place and in such a manner as to prevent cross contamination with other crop protection products, fertilizers, food, and feed. Store in original container and out of the reach of children, preferably in a locked storage area.

**SECTION 8: EXPOSURE CONTROLS/PERSONAL PROTECTION****Control parameters**

Components	CAS-No.	Control parameters	Update	Basis
Imidacloprid	138261-41-3	50ug/m3 (ST ESL)	07 2011	TX ESL
Imidacloprid	138261-41-3	5ug/m3 (AN ESL)	07 2011	TX ESL
Imidacloprid	138261-41-3	0.7 mg/m3 (TWA)		OES BCS*
Beta-Cyfluthrin	68359-37-5	5ug/m3 (AN ESL)	03 2014	TX ESL
Beta-Cyfluthrin	68359-37-5	50ug/m3 (ST ESL)	03 2014	TX ESL
Beta-Cyfluthrin	68359-37-5	0.01 mg/m3 (TWA)		OES BCS*

\*OES BCS: Internal Bayer CropScience "Occupational Exposure Standard"

**Exposure controls****Personal protective equipment**

In normal use and handling conditions please refer to the label and/or leaflet. In all other cases the following recommendations would apply.

**Respiratory protection**

When respirators are required, select NIOSH approved equipment based on actual or potential airborne concentrations and in accordance with the appropriate regulatory standards and/or industry recommendations.

**Hand protection**

Chemical resistant nitrile rubber gloves

**Eye protection**

Tightly fitting safety goggles

**TEMPRID® READY-TO-SPRAY INSECTICIDE**Version 3.0 / USA  
1020000265445/11  
Revision Date: 11/09/2015  
Print Date: 11/09/2015

---

<b>Skin and body protection</b>	Wear long-sleeved shirt and long pants and shoes plus socks.
<b>General protective measures</b>	Follow manufacturer's instructions for cleaning/maintaining PPE. If no such instructions for washables, use detergent and warm/tepid water. Keep and wash PPE separately from other laundry.

---

**SECTION 9. PHYSICAL AND CHEMICAL PROPERTIES**

<b>Appearance</b>	white to beige
<b>Physical State</b>	Liquid
<b>Odor</b>	slight
<b>Odour Threshold</b>	no data available
<b>pH</b>	5.8 - 6.8 at 100 %
<b>Vapor Pressure</b>	no data available
<b>Vapor Density (Air = 1)</b>	no data available
<b>Density</b>	1.00 g/cm <sup>3</sup> at 20 °C
<b>Evaporation rate</b>	no data available
<b>Boiling Point</b>	no data available
<b>Melting / Freezing Point</b>	no data available
<b>Water solubility</b>	dispersible
<b>Minimum Ignition Energy</b>	not applicable
<b>Decomposition temperature</b>	no data available
<b>Partition coefficient: n-octanol/water</b>	no data available
<b>Viscosity</b>	360 mPa.s
<b>Flash point</b>	> 93.3 °C
<b>Autoignition temperature</b>	no data available
<b>Lower explosion limit</b>	no data available
<b>Upper explosion limit</b>	no data available
<b>Explosivity</b>	not applicable

---

**TEMPRID® READY-TO-SPRAY INSECTICIDE**Version 3.0 / USA  
1020000265446/11  
Revision Date: 11/09/2015  
Print Date: 11/09/2015**SECTION 10: STABILITY AND REACTIVITY****Reactivity**

<b>Thermal decomposition</b>	no data available
<b>Chemical stability</b>	Stable under recommended storage conditions.
<b>Possibility of hazardous reactions</b>	No hazardous reactions when stored and handled according to prescribed instructions.
<b>Conditions to avoid</b>	Extremes of temperature and direct sunlight.
<b>Incompatible materials</b>	no data available
<b>Hazardous decomposition products</b>	No decomposition products expected under normal conditions of use.

**SECTION 11: TOXICOLOGICAL INFORMATION****Exposure routes** Inhalation, Skin contact, Eye contact**Immediate Effects****Eye** May cause slight irritation.**Skin** May cause slight irritation.**Inhalation** May cause irritation.**Information on toxicological effects****Acute oral toxicity** LD50 (rat) > 5,000 mg/kg**Acute inhalation toxicity** LC50 (rat) > 5.0 mg/l  
Exposure time: 4 h**Acute dermal toxicity** LD50 (rat) > 5,000 mg/kg**Skin irritation** Slight irritation (rabbit)**Eye irritation** Minimally irritating. (rabbit)**Sensitisation** Non-sensitizing. (guinea pig)**Assessment repeated dose toxicity**

Imidacloprid did not cause specific target organ toxicity in experimental animal studies. The toxic effects of Beta-Cyfluthrin are related to transient hyperactivity typical for pyrethroid neurotoxicity.

**Assessment mutagenicity**

Imidacloprid was not mutagenic or genotoxic based on the overall weight of evidence in a battery of in vitro and in vivo tests.

Beta-Cyfluthrin was not mutagenic or genotoxic in a battery of in vitro and in vivo tests.



### TEMPRID® READY-TO-SPRAY INSECTICIDE

Version 3.0 / USA  
102000026544

7/11  
Revision Date: 11/09/2015  
Print Date: 11/09/2015

---

#### Assessment carcinogenicity

Imidacloprid was not carcinogenic in lifetime feeding studies in rats and mice.  
Beta-Cyfluthrin was not carcinogenic in lifetime feeding studies in rats and mice.

#### ACGIH

None.

#### NTP

None.

#### IARC

None.

#### OSHA

None.

#### Assessment toxicity to reproduction

Imidacloprid caused reproduction toxicity in a two-generation study in rats only at dose levels also toxic to the parent animals. The reproduction toxicity seen with Imidacloprid is related to parental toxicity.  
Beta-Cyfluthrin caused reproduction toxicity in a two-generation study in rats only at dose levels also toxic to the parent animals. The reproduction toxicity seen with Beta-Cyfluthrin is related to parental toxicity.

#### Assessment developmental toxicity

Imidacloprid caused developmental toxicity only at dose levels toxic to the dams. The developmental effects seen with Imidacloprid are related to maternal toxicity.  
Beta-Cyfluthrin caused developmental toxicity only at dose levels toxic to the dams. The developmental effects seen with Beta-Cyfluthrin are related to maternal toxicity.

#### Further information

Acute toxicity studies have been bridged from a similar formulation(s).  
The non-acute information pertains to the active ingredient(s).

---

## SECTION 12: ECOLOGICAL INFORMATION

#### Toxicity to fish

LC50 (Oncorhynchus mykiss (rainbow trout)) 211 mg/l  
Exposure time: 96 h  
The value mentioned relates to the active ingredient imidacloprid.

LC50 (Oncorhynchus mykiss (rainbow trout)) 0.000068 mg/l  
Exposure time: 96 h  
The value mentioned relates to the active ingredient beta-cyfluthrin.

#### Toxicity to aquatic invertebrates

EC50 (Daphnia magna (Water flea)) 85 mg/l  
Exposure time: 48 h  
The value mentioned relates to the active ingredient imidacloprid.

LC50 (Chironomus riparius (non-biting midge)) 0.0552 mg/l





### TEMPRID® READY-TO-SPRAY INSECTICIDE

Version 3.0 / USA  
102000026544

8/11  
Revision Date: 11/09/2015  
Print Date: 11/09/2015

	Exposure time: 24 h The value mentioned relates to the active ingredient imidacloprid.
	EC50 (Daphnia magna (Water flea)) 0.00029 mg/l Exposure time: 48 h The value mentioned relates to the active ingredient beta-cyfluthrin.
<b>Toxicity to aquatic plants</b>	EC50 (Desmodesmus subspicatus (green algae)) > 10 mg/l Growth rate; Exposure time: 72 h The value mentioned relates to the active ingredient imidacloprid.  IC50 (Desmodesmus subspicatus (green algae)) > 0.01 mg/l Growth rate; Exposure time: 72 h The value mentioned relates to the active ingredient beta-cyfluthrin. No acute toxicity was observed at its limit of water solubility.
<b>Biodegradability</b>	Imidacloprid: not rapidly biodegradable Beta-Cyfluthrin: not rapidly biodegradable
<b>Koc</b>	Imidacloprid: Koc: 225 Beta-Cyfluthrin: Koc: 508 - 3179
<b>Bioaccumulation</b>	Imidacloprid: Does not bioaccumulate. Beta-Cyfluthrin: Bioconcentration factor (BCF) 506 Does not bioaccumulate.
<b>Mobility in soil</b>	Imidacloprid: Moderately mobile in soils Beta-Cyfluthrin: Immobile in soil
<b>Environmental precautions</b>	Do not allow to get into surface water, drains and ground water. Do not apply directly to water, to areas where surface water is present or to intertidal areas below the mean high water mark. Drift and runoff from treated areas may be hazardous to aquatic organisms in adjacent sites. Do not contaminate surface or ground water by cleaning equipment or disposal of wastes, including equipment wash water. Do not apply this product or allow it to drift to blooming crops or weeds if bees are visiting the treatment area.

---

## SECTION 13: DISPOSAL CONSIDERATIONS

### Waste treatment methods

#### Product

Follow advice on product label and/or leaflet.  
Do not contaminate water, food, or feed by disposal.  
Dispose in accordance with all local, state/provincial and federal regulations.  
Never place unused product down any indoor or outdoor drain.



### TEMPRID® READY-TO-SPRAY INSECTICIDE

Version 3.0 / USA  
102000026544

9/11  
Revision Date: 11/09/2015  
Print Date: 11/09/2015

<b>Contaminated packaging</b>	Follow advice on product label and/or leaflet. Do not puncture or incinerate container. Consult state and local regulations regarding the proper disposal of container.
<b>RCRA Information</b>	Characterization and proper disposal of this material as a special or hazardous waste is dependent upon Federal, State and local laws and are the user's responsibility. RCRA classification may apply.

---

## SECTION 14: TRANSPORT INFORMATION

### 49CFR

UN number	<b>1950</b>
Class	2.2
Packaging group	
Proper shipping name	AEROSOLS

### IMDG

UN number	<b>1950</b>
Class	2.2
Packaging group	
Marine pollutant	YES
Proper shipping name	AEROSOLS

### IATA

UN number	<b>1950</b>
Class	2.2
Packaging group	
Environm. Hazardous Mark	NO
Proper shipping name	AEROSOLS, NON-FLAMMABLE

This transportation information is not intended to convey all specific regulatory information relating to this product. It does not address regulatory variations due to package size or special transportation requirements.

---

## SECTION 15: REGULATORY INFORMATION

**EPA Registration No.** 432-1527

### US Federal Regulations

#### TSCA list

None.

#### US. Toxic Substances Control Act (TSCA) Section 12(b) Export Notification (40 CFR 707, Subpt D)

None.

#### SARA Title III - Section 302 - Notification and Information

None.

#### SARA Title III - Section 313 - Toxic Chemical Release Reporting

# Bayer Environmental Science

## SAFETY DATA SHEET



### TEMPRID® READY-TO-SPRAY INSECTICIDE

Version 3.0 / USA  
102000026544

10/11  
Revision Date: 11/09/2015  
Print Date: 11/09/2015

Beta-Cyfluthrin 68359-37-5

#### US States Regulatory Reporting

##### CA Prop65

This product does not contain any substances known to the State of California to cause cancer.

This product does not contain any substances known to the State of California to cause reproductive harm.

#### US State Right-To-Know Ingredients

Beta-Cyfluthrin 68359-37-5 NJ, RI

#### Canadian Regulations

##### Canadian Domestic Substance List

None.

#### Environmental

##### CERCLA

None.

##### Clean Water Section 307 Priority Pollutants

None.

##### Safe Drinking Water Act Maximum Contaminant Levels

None.

#### EPA/FIFRA Information:

This chemical is a pesticide product registered by the Environmental Protection Agency and is subject to certain labeling requirements under federal pesticide law. These requirements differ from the classification criteria and hazard information required for safety data sheets, and for workplace labels of non-pesticide chemicals. Following is the hazard information required on the pesticide label:

**Hazard statements:** Wash thoroughly with soap and water after handling.

---

## SECTION 16: OTHER INFORMATION

#### Abbreviations and acronyms

49CFR	Code of Federal Regulations, Title 49
ACGIH	US. ACGIH Threshold Limit Values
CAS-Nr.	Chemical Abstracts Service number
EINECS	European inventory of existing commercial substances
ELINCS	European list of notified chemical substances
IARC	US. IARC Monographs on Occupational Exposures to Chemical Agents
IATA	International Air Transport Association
IMDG	International Maritime Dangerous Goods
N.O.S.	Not otherwise specified
NTP	US. National Toxicology Program (NTP) Report on Carcinogens
OECD	Organization for Economic Co-operation and Development
TDG	Transportation of Dangerous Goods
TWA	Time weighted average

# Bayer Environmental Science

## SAFETY DATA SHEET



### TEMPRID® READY-TO-SPRAY INSECTICIDE

Version 3.0 / USA  
102000026544

11/11  
Revision Date: 11/09/2015  
Print Date: 11/09/2015

UN United Nations  
WHO World health organisation

**NFPA 704 (National Fire Protection Association):**

Health - 1      Flammability - 1      Instability - 0      Others - none

**HMIS (Hazardous Materials Identification System, based on the Third Edition Ratings Guide)**

Health - 1      Flammability - 1      Physical Hazard - 0      PPE -

0 = minimal hazard, 1 = slight hazard, 2 = moderate hazard, 3 = severe hazard, 4 = extreme hazard

**Reason for Revision:** The following sections have been revised: Section 2: Hazards Identification.  
Reviewed and updated for general editorial purposes.

**Revision Date:** 11/09/2015

This information is provided in good faith but without express or implied warranty. The customer assumes all responsibility for safety and use not in accordance with label instructions. The product names are registered trademarks of Bayer.